

RGB LEDs

Automotive Ambient Lighting

— Attractive design combined with new functions —



Compact

Qualified

Bright and uniform light

Stanley Electric has many years of experiences as a supplier of LEDs for automotive exterior and interior lighting.



Shy Tech display
Hidden beneath textiles or plastics, visible when switched-on

Benefit

Comfortable / Reliable

Attractive color

Design flexibility

Features

Automotive quality : AEC-Q102 qualified

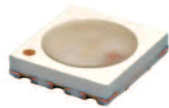
High brightness, resolution, and color homogeneity
Chip layout : Triangle arrangement improves color mixing

Compact size (W, D, H mm) 2.1*2.1, t=1.0 / 2.04*2.04, t=0.6 / 4.5 * 1.15, t=1.35
Narrow chip layout : Shorter lighting distance enables reducing installation spaces

Specifications

CRGB1314ASE-500

AEC-Q102



Thin package, low current

3.0*2.8, t=0.6 mm

CRGB1318FSE-500

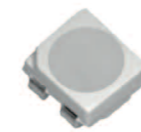


Side & thin package, low current

4.5*1.15, t=1.35 mm

Type A

Under development*



Small & thin package, low current

2.1*2.1, t=1.0 mm

Type C

Concept model*



Thin package, high current

3.8*3.8, t=0.75 mm

Features

Package size

IF Max.



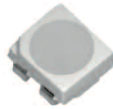
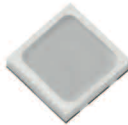
Luminous intensity

Dominant wavelength

Half intensity angle

	CRGB1314ASE-500			CRGB1318FSE-500			Type A			Type C		
	R	G	B	R	G	B	R	G	B	R	G	B
IF Max.	30mA	25mA	25mA	30mA	25mA	25mA	30mA	30mA	30mA	250mA	250mA	250mA
Luminous intensity	820mcd@22mA	2,080mcd@23mA	300mcd@14mA	800mcd@24mA	1,800mcd@20mA	210mcd@14mA	800mcd@20mA	1,800mcd@20mA	270mcd / 480mcd @20mA	12,500mcd@200mA	14,000mcd@200mA	4,200mcd@200mA
Dominant wavelength	622nm@22mA	532nm@23mA	469nm@14mA	620nm@24mA	524nm@20mA	470nm@14mA	623nm@20mA	527nm@20mA	455nm / 470nm @20mA	626nm@200mA	520nm@200mA	464nm@200mA
Half intensity angle	X=120,Y=120			X=110,Y=110			X=120,Y=120			X=120,Y=120		

* Products' specifications under development may change before their mass production.

		CRGB1314 ASE-500	CRGB1318 FSE-500	Type A	Type C
		 AEC-Q102		 Under development*	 Concept model*
Features		Thin package, low current	Side & thin package, low current	Small & thin package, low current	Thin package, high current
Package size (mm)		3.0*2.8, t=0.6	4.5*1.15, t=1.35	2.1*2.1, t=1.0	3.8*3.8, t=0.75
Terminals (pin)		6	6	4 (Anode common)	6
Forward voltage (V)		R=2.1 G=3.2 B=3.1	R=2.0 G=2.8 B=2.9	R=2.2 G=2.9 B=2.9	R=2.3 G=3.1 B=3.1
Forward current (mA)		R=22 G=23 B=14	R=24 G=20 B=14	all 20	all 200
IF Max. (mA)		R=30 G=25 B=25	R=30 G=25 B=25	all 30	all 250
Luminous intensity (mcd)	R	820	800	800	12,500
	G	2,080	1,800	1,800	14,000
	B	300	210	270/ 480	4,200
Dominant wavelength (nm)	R	622	620	623	626
	G	532	524	527	520
	B	469	470	455 / 470	464
LED layout		Straight	Straight	Triangle Close	Triangle Close
Operating temperature (°C)		-40 to 100	-40 to 100	-40 to 115	-40 to 125
Tj Max (°C)		120	120	115	125
ESD (kV)		2	2	2	2

*Products' specifications under development may change before their mass production.

For more information <https://www.stanley-components.com/en/product/multi-color.html>

Contact <https://info.stanley.co.jp/public/application/add/64>

Information



Contact



Dated April, 2023

STANLEY ELECTRIC CO., LTD.